

检测报告
Test Report



报告编号 A2210013893101E
Report No. A2210013893101E

第 1 页 共 21 页
Page 1 of 21

报告抬头公司名称 溧阳欣大精密电子有限公司
Company Name LIYANG XIN DA PRECISION ELECTRONICS CO.,LTD.
shown on Report

地址 江苏省溧阳市昆仑经济开发区腾飞路 8 号
Address NO.8 TENGFEI ROAD,KUNLUN ECONOMIC DEVELOPMENT ZONE OF LIYANG CITY ,JIANGSU CHINA

以下测试之样品及样品信息由申请者提供并确认 The following sample(s) and sample information was/were submitted and identified by/on the behalf of the applicant

成品名称 继电器插座
Final Product Name Relays Socket
成品型号 插座系列、122 系列、132 系列、133 系列、134 系列、941 系列、942 系列、943 系列、945 系列、946 系列、948 系列、951 系列、952 系列、953 系列、956 系列、957 系列、963 系列、964 系列、971 系列、972 系列、981 系列、Y14 系列、Y31 系列、Y02 系列、Y05 系列、171 系列、172 系列、161 系列、982 系列、961 系列
Final Product Parts No. Socket Series、122 Series、132 Series、133 Series、134 Series、941 Series、942 Series、943 Series、945 Series、946 Series、948 Series、951 Series、952 Series、953 Series、956 Series、957 Series、963 Series、964 Series、971 Series、972 Series、981 Series、Y14 Series、Y31 Series、Y02 Series、Y05 Series、171Series、172Series、161Series、982Series、961 Series

样品接收日期 2021.01.14
Sample Received Date Jan. 14, 2021
样品检测日期 2021.01.14-2021.01.19
Testing Period Jan. 14, 2021 to Jan. 19, 2021

检测依据/检测结果/检测要求 请参见下页。
Test Method/Test Result(s)/ Test Requested Please refer to the following page(s).

主 检 王怀军 审 核 徐忠娟
Tested by Reviewed by

批 准 陈凯敏 日 期 2021.02.03
Approved by Date

陈凯敏
实验室经理 Lab Manager

No. R295825201

上海市闵行区万芳路 1351 号

上海华测品标检测技术有限公司
Centre Testing International Pinbiao(Shanghai) Co., Ltd.

No.1351, Wanfang Road, Minhang District, Shanghai, China

检测报告

Test Report

报告编号 A2210013893101E
Report No. A2210013893101E

第 2 页 共 21 页
Page 2 of 21

以下测试之样品及样品信息由申请者提供并确认 The following sample(s) and sample information was/were submitted and identified by/on the behalf of the applicant

样品序号 Sample No.	样品名称 Sample Name
001	PBT(黑/白) PBT(Black/White)
002	PET/PPS/LCP
003	PA66/PJ-4(酚醛膜)/POM/PC PA66/PJ-4(Phenolic moulding)/POM
004	铁 iron
005	铜合金 Copper alloy
006	铜合金 Copper alloy
007	铜合金 Copper alloy
008	铜合金 Copper alloy
009	接点 Contacts
010	Ag
011	钢 Steel
012	胶 Glue
013	油墨 Ink
014	发光二极管/二极管 LED/Diode
015	聚脂薄膜 Polyester film
016	漆包线 Enameled
017	铜包钢线 Copper Clad Steel
018	碳膜电阻 Resistor
019	硅胶 Silicon Dioxide

检测报告

Test Report

报告编号 A2210013893101E
Report No. A2210013893101E

第 3 页 共 21 页
Page 3 of 21

样品序号 Sample No.	样品名称 Sample Name
020	镀锡铜丝 Tinned copper wire
021	铝 AL

检测要求

根据客户要求, 对所提交样品中的铅(Pb), 镉(Cd), 汞(Hg), 六价铬(Cr(VI)), 多溴联苯(PBBs), 多溴二苯醚(PBDEs), 邻苯二甲酸酯(DBP, BBP, DEHP, DIBP)进行测试。

Test Requested

As specified by client, to test Lead (Pb), Cadmium (Cd), Mercury (Hg), Hexavalent Chromium (Cr(VI)), Polybrominated Biphenyls (PBBs), Polybrominated Diphenyl Ethers (PBDEs), Phthalates (DBP, BBP, DEHP, DIBP) in the submitted sample(s).

检测报告

Test Report

报告编号 A2210013893101E
Report No. A2210013893101E

第 4 页 共 21 页
Page 4 of 21

检测依据 Test Method

测试项目 Tested Item(s)	测试方法 Test Method	测试仪器 Measured Equipment(s)
铅 Lead (Pb)	IEC 62321-5:2013	ICP-OES
镉 Cadmium (Cd)	IEC 62321-5:2013	ICP-OES
汞 Mercury (Hg)	IEC 62321-4:2013+AMD1:2017 CSV	ICP-OES
六价铬 Hexavalent Chromium (Cr(VI))	IEC 62321-7-1:2015	UV-Vis
	IEC 62321-7-2:2017 和/或 IEC 62321-5:2013 测试总铬含量 IEC 62321-7-2:2017 and/or determination of Total Chromium by IEC 62321-5:2013	UV-Vis/ICP-OES
多溴联苯 Polybrominated Biphenyls (PBBs)	IEC 62321-6:2015	GC-MS
多溴二苯醚 Polybrominated Diphenyl Ethers (PBDEs)	IEC 62321-6:2015	GC-MS
邻苯二甲酸酯 Phthalates (DBP, BBP, DEHP, DIBP)	IEC 62321-8:2017	GC-MS

检测结果 Test Result(s)

测试项目 Tested Item(s)	结果 Result			方法检出限 MDL
	001	002	003	
铅 Lead (Pb)	10 mg/kg	N.D.	N.D.	2 mg/kg
镉 Cadmium (Cd)	N.D.	N.D.	N.D.	2 mg/kg
汞 Mercury (Hg)	N.D.	N.D.	N.D.	2 mg/kg
六价铬 Hexavalent Chromium (Cr(VI))	N.D.	N.D.	N.D.	8 mg/kg
	--	--	--	0.10 µg/cm ² (LOQ)

测试项目 Tested Item(s)	结果 Result			方法检出限 MDL
	004	005	006	
铅 Lead (Pb)	N.D.	24 mg/kg	9 mg/kg	2 mg/kg
镉 Cadmium (Cd)	N.D.	N.D.	N.D.	2 mg/kg
汞 Mercury (Hg)	N.D.	N.D.	N.D.	2 mg/kg
六价铬 Hexavalent Chromium (Cr(VI))	--	--	--	8 mg/kg
	N.D.▼	N.D.▼	N.D.▼	0.10 µg/cm ² (LOQ)

检测报告

Test Report

报告编号 A2210013893101E
Report No. A2210013893101E

第 5 页 共 21 页
Page 5 of 21

测试项目 Tested Item(s)	结果 Result			方法检出限 MDL
	007	008	009	
铅 Lead (Pb)	N.D.	N.D.	N.D.	2 mg/kg
镉 Cadmium (Cd)	N.D.	N.D.	N.D.	2 mg/kg
汞 Mercury (Hg)	N.D.	N.D.	N.D.	2 mg/kg
六价铬 Hexavalent Chromium (Cr(VI))	--	--	--	8 mg/kg
	N.D.▼	N.D.▼	N.D.▼	0.10 µg/cm ² (LOQ)

测试项目 Tested Item(s)	结果 Result			方法检出限 MDL
	010	011	012	
铅 Lead (Pb)	N.D.	N.D.	N.D.	2 mg/kg
镉 Cadmium (Cd)	N.D.	N.D.	N.D.	2 mg/kg
汞 Mercury (Hg)	N.D.	N.D.	N.D.	2 mg/kg
六价铬 Hexavalent Chromium (Cr(VI))	--	--	N.D.	8 mg/kg
	N.D.▼	N.D.▼	--	0.10 µg/cm ² (LOQ)

测试项目 Tested Item(s)	结果 Result			方法检出限 MDL
	013	014	015	
铅 Lead (Pb)	N.D.	N.D.	9 mg/kg	2 mg/kg
镉 Cadmium (Cd)	N.D.	N.D.	N.D.	2 mg/kg
汞 Mercury (Hg)	N.D.	N.D.	N.D.	2 mg/kg
六价铬 Hexavalent Chromium (Cr(VI))	N.D.	N.D.	N.D.	8 mg/kg
	--	--	--	0.10 µg/cm ² (LOQ)

测试项目 Tested Item(s)	结果 Result			方法检出限 MDL
	016	017	018	
铅 Lead (Pb)	N.D.	N.D.	N.D.	2 mg/kg
镉 Cadmium (Cd)	N.D.	N.D.	N.D.	2 mg/kg
汞 Mercury (Hg)	N.D.	N.D.	N.D.	2 mg/kg
六价铬 Hexavalent Chromium (Cr(VI))	N.D.	--	N.D.	8 mg/kg
	--	N.D.▼	--	0.10 µg/cm ² (LOQ)

检测报告

Test Report

报告编号 A2210013893101E
Report No. A2210013893101E

第 6 页 共 21 页
Page 6 of 21

测试项目 Tested Item(s)	结果 Result			方法检出限 MDL
	019	020	021	
铅 Lead (Pb)	N.D.	N.D.	N.D.	2 mg/kg
镉 Cadmium (Cd)	N.D.	N.D.	N.D.	2 mg/kg
汞 Mercury (Hg)	N.D.	N.D.	N.D.	2 mg/kg
六价铬 Hexavalent Chromium (Cr(VI))	N.D.	--	--	8 mg/kg
	--	N.D.▼	N.D.▼	0.10 µg/cm ² (LOQ)

测试项目 Tested Item(s)	结果 Result			方法检出限 MDL
	001	002	003	
多溴联苯 Polybrominated Biphenyls (PBBs)				
一溴联苯 Monobromobiphenyl	N.D.	N.D.	N.D.	5 mg/kg
二溴联苯 Dibromobiphenyl	N.D.	N.D.	N.D.	5 mg/kg
三溴联苯 Tribromobiphenyl	N.D.	N.D.	N.D.	5 mg/kg
四溴联苯 Tetrabromobiphenyl	N.D.	N.D.	N.D.	5 mg/kg
五溴联苯 Pentabromobiphenyl	N.D.	N.D.	N.D.	5 mg/kg
六溴联苯 Hexabromobiphenyl	N.D.	N.D.	N.D.	5 mg/kg
七溴联苯 Heptabromobiphenyl	N.D.	N.D.	N.D.	5 mg/kg
八溴联苯 Octabromobiphenyl	N.D.	N.D.	N.D.	5 mg/kg
九溴联苯 Nonabromobiphenyl	N.D.	N.D.	N.D.	5 mg/kg
十溴联苯 Decabromobiphenyl	N.D.	N.D.	N.D.	5 mg/kg

检测报告

Test Report

报告编号 A2210013893101E
Report No. A2210013893101E

第 7 页 共 21 页
Page 7 of 21

测试项目 Tested Item(s)	结果 Result			方法检出限 MDL
	012	013	014	
多溴联苯 Polybrominated Biphenyls (PBBs)				
一溴联苯 Monobromobiphenyl	N.D.	N.D.	N.D.	5 mg/kg
二溴联苯 Dibromobiphenyl	N.D.	N.D.	N.D.	5 mg/kg
三溴联苯 Tribromobiphenyl	N.D.	N.D.	N.D.	5 mg/kg
四溴联苯 Tetrabromobiphenyl	N.D.	N.D.	N.D.	5 mg/kg
五溴联苯 Pentabromobiphenyl	N.D.	N.D.	N.D.	5 mg/kg
六溴联苯 Hexabromobiphenyl	N.D.	N.D.	N.D.	5 mg/kg
七溴联苯 Heptabromobiphenyl	N.D.	N.D.	N.D.	5 mg/kg
八溴联苯 Octabromobiphenyl	N.D.	N.D.	N.D.	5 mg/kg
九溴联苯 Nonabromobiphenyl	N.D.	N.D.	N.D.	5 mg/kg
十溴联苯 Decabromobiphenyl	N.D.	N.D.	N.D.	5 mg/kg

测试项目 Tested Item(s)	结果 Result			方法检出限 MDL
	015	016	018	
多溴联苯 Polybrominated Biphenyls (PBBs)				
一溴联苯 Monobromobiphenyl	N.D.	N.D.	N.D.	5 mg/kg
二溴联苯 Dibromobiphenyl	N.D.	N.D.	N.D.	5 mg/kg
三溴联苯 Tribromobiphenyl	N.D.	N.D.	N.D.	5 mg/kg
四溴联苯 Tetrabromobiphenyl	N.D.	N.D.	N.D.	5 mg/kg
五溴联苯 Pentabromobiphenyl	N.D.	N.D.	N.D.	5 mg/kg
六溴联苯 Hexabromobiphenyl	N.D.	N.D.	N.D.	5 mg/kg
七溴联苯 Heptabromobiphenyl	N.D.	N.D.	N.D.	5 mg/kg
八溴联苯 Octabromobiphenyl	N.D.	N.D.	N.D.	5 mg/kg
九溴联苯 Nonabromobiphenyl	N.D.	N.D.	N.D.	5 mg/kg
十溴联苯 Decabromobiphenyl	N.D.	N.D.	N.D.	5 mg/kg

检测报告

Test Report

报告编号 A2210013893101E
Report No. A2210013893101E

第 8 页 共 21 页
Page 8 of 21

测试项目 Tested Item(s)	结果 Result		方法检出限 MDL
	019		
多溴联苯 Polybrominated Biphenyls (PBBs)			
一溴联苯 Monobromobiphenyl	N.D.		5 mg/kg
二溴联苯 Dibromobiphenyl	N.D.		5 mg/kg
三溴联苯 Tribromobiphenyl	N.D.		5 mg/kg
四溴联苯 Tetrabromobiphenyl	N.D.		5 mg/kg
五溴联苯 Pentabromobiphenyl	N.D.		5 mg/kg
六溴联苯 Hexabromobiphenyl	N.D.		5 mg/kg
七溴联苯 Heptabromobiphenyl	N.D.		5 mg/kg
八溴联苯 Octabromobiphenyl	N.D.		5 mg/kg
九溴联苯 Nonabromobiphenyl	N.D.		5 mg/kg
十溴联苯 Decabromobiphenyl	N.D.		5 mg/kg

测试项目 Tested Item(s)	结果 Result			方法检出限 MDL
	001	002	003	
多溴二苯醚 Polybrominated Diphenyl Ethers (PBDEs)				
一溴二苯醚 Monobromodiphenyl ether	N.D.	N.D.	N.D.	5 mg/kg
二溴二苯醚 Dibromodiphenyl ether	N.D.	N.D.	N.D.	5 mg/kg
三溴二苯醚 Tribromodiphenyl ether	N.D.	N.D.	N.D.	5 mg/kg
四溴二苯醚 Tetrabromodiphenyl ether	N.D.	N.D.	N.D.	5 mg/kg
五溴二苯醚 Pentabromodiphenyl ether	N.D.	N.D.	N.D.	5 mg/kg
六溴二苯醚 Hexabromodiphenyl ether	N.D.	N.D.	N.D.	5 mg/kg
七溴二苯醚 Heptabromodiphenyl ether	N.D.	N.D.	N.D.	5 mg/kg
八溴二苯醚 Octabromodiphenyl ether	N.D.	N.D.	N.D.	5 mg/kg
九溴二苯醚 Nonabromodiphenyl ether	N.D.	N.D.	N.D.	5 mg/kg
十溴二苯醚 Decabromodiphenyl ether	N.D.	N.D.	N.D.	5 mg/kg

检测报告

Test Report

报告编号 A2210013893101E
Report No. A2210013893101E

第 9 页 共 21 页
Page 9 of 21

测试项目 Tested Item(s)	结果 Result			方法检出限 MDL
	012	013	014	
多溴二苯醚 Polybrominated Diphenyl Ethers (PBDEs)				
一溴二苯醚 Monobromodiphenyl ether	N.D.	N.D.	N.D.	5 mg/kg
二溴二苯醚 Dibromodiphenyl ether	N.D.	N.D.	N.D.	5 mg/kg
三溴二苯醚 Tribromodiphenyl ether	N.D.	N.D.	N.D.	5 mg/kg
四溴二苯醚 Tetrabromodiphenyl ether	N.D.	N.D.	N.D.	5 mg/kg
五溴二苯醚 Pentabromodiphenyl ether	N.D.	N.D.	N.D.	5 mg/kg
六溴二苯醚 Hexabromodiphenyl ether	N.D.	N.D.	N.D.	5 mg/kg
七溴二苯醚 Heptabromodiphenyl ether	N.D.	N.D.	N.D.	5 mg/kg
八溴二苯醚 Octabromodiphenyl ether	N.D.	N.D.	N.D.	5 mg/kg
九溴二苯醚 Nonabromodiphenyl ether	N.D.	N.D.	N.D.	5 mg/kg
十溴二苯醚 Decabromodiphenyl ether	N.D.	N.D.	N.D.	5 mg/kg

测试项目 Tested Item(s)	结果 Result			方法检出限 MDL
	015	016	018	
多溴二苯醚 Polybrominated Diphenyl Ethers (PBDEs)				
一溴二苯醚 Monobromodiphenyl ether	N.D.	N.D.	N.D.	5 mg/kg
二溴二苯醚 Dibromodiphenyl ether	N.D.	N.D.	N.D.	5 mg/kg
三溴二苯醚 Tribromodiphenyl ether	N.D.	N.D.	N.D.	5 mg/kg
四溴二苯醚 Tetrabromodiphenyl ether	N.D.	N.D.	N.D.	5 mg/kg
五溴二苯醚 Pentabromodiphenyl ether	N.D.	N.D.	N.D.	5 mg/kg
六溴二苯醚 Hexabromodiphenyl ether	N.D.	N.D.	N.D.	5 mg/kg
七溴二苯醚 Heptabromodiphenyl ether	N.D.	N.D.	N.D.	5 mg/kg
八溴二苯醚 Octabromodiphenyl ether	N.D.	N.D.	N.D.	5 mg/kg
九溴二苯醚 Nonabromodiphenyl ether	N.D.	N.D.	N.D.	5 mg/kg
十溴二苯醚 Decabromodiphenyl ether	N.D.	N.D.	N.D.	5 mg/kg

检测报告

Test Report

报告编号 A2210013893101E
Report No. A2210013893101E

第 10 页 共 21 页
Page 10 of 21

测试项目 Tested Item(s)	结果 Result		方法检出限 MDL
	019		
多溴二苯醚 Polybrominated Diphenyl Ethers (PBDEs)			
一溴二苯醚 Monobromodiphenyl ether	N.D.		5 mg/kg
二溴二苯醚 Dibromodiphenyl ether	N.D.		5 mg/kg
三溴二苯醚 Tribromodiphenyl ether	N.D.		5 mg/kg
四溴二苯醚 Tetrabromodiphenyl ether	N.D.		5 mg/kg
五溴二苯醚 Pentabromodiphenyl ether	N.D.		5 mg/kg
六溴二苯醚 Hexabromodiphenyl ether	N.D.		5 mg/kg
七溴二苯醚 Heptabromodiphenyl ether	N.D.		5 mg/kg
八溴二苯醚 Octabromodiphenyl ether	N.D.		5 mg/kg
九溴二苯醚 Nonabromodiphenyl ether	N.D.		5 mg/kg
十溴二苯醚 Decabromodiphenyl ether	N.D.		5 mg/kg

测试项目 Tested Item(s)	结果 Result			方法检出限 MDL
	001	002	003	
邻苯二甲酸酯 Phthalates (DBP, BBP, DEHP, DIBP)				
邻苯二甲酸二丁酯 Dibutyl phthalate (DBP) CAS#:84-74-2	N.D.	N.D.	N.D.	50 mg/kg
邻苯二甲酸丁基苄基酯 Butyl benzyl phthalate (BBP) CAS#:85-68-7	N.D.	N.D.	N.D.	50 mg/kg
邻苯二甲酸二(2-乙基)己酯 Di-(2-ethylhexyl) phthalate (DEHP) CAS#:117-81-7	N.D.	N.D.	N.D.	50 mg/kg
邻苯二甲酸二异丁酯 Diisobutyl phthalate (DIBP) CAS#:84-69-5	N.D.	N.D.	N.D.	50 mg/kg

检测报告

Test Report

报告编号 A2210013893101E
Report No. A2210013893101E

第 11 页 共 21 页
Page 11 of 21

测试项目 Tested Item(s)	结果 Result			方法检出限 MDL
	012	013	014	
邻苯二甲酸酯 Phthalates (DBP, BBP, DEHP, DIBP)				
邻苯二甲酸二丁酯 Dibutyl phthalate (DBP) CAS#:84-74-2	N.D.	N.D.	N.D.	50 mg/kg
邻苯二甲酸丁基苄基酯 Butyl benzyl phthalate (BBP) CAS#:85-68-7	N.D.	N.D.	N.D.	50 mg/kg
邻苯二甲酸二(2-乙基)己酯 Di-(2-ethylhexyl) phthalate (DEHP) CAS#:117-81-7	N.D.	N.D.	N.D.	50 mg/kg
邻苯二甲酸二异丁酯 Diisobutyl phthalate (DIBP) CAS#:84-69-5	N.D.	N.D.	N.D.	50 mg/kg

测试项目 Tested Item(s)	结果 Result			方法检出限 MDL
	015	016	018	
邻苯二甲酸酯 Phthalates (DBP, BBP, DEHP, DIBP)				
邻苯二甲酸二丁酯 Dibutyl phthalate (DBP) CAS#:84-74-2	N.D.	N.D.	N.D.	50 mg/kg
邻苯二甲酸丁基苄基酯 Butyl benzyl phthalate (BBP) CAS#:85-68-7	N.D.	N.D.	N.D.	50 mg/kg
邻苯二甲酸二(2-乙基)己酯 Di-(2-ethylhexyl) phthalate (DEHP) CAS#:117-81-7	N.D.	N.D.	N.D.	50 mg/kg
邻苯二甲酸二异丁酯 Diisobutyl phthalate (DIBP) CAS#:84-69-5	N.D.	N.D.	N.D.	50 mg/kg

检测报告

Test Report

报告编号 A2210013893101E
Report No. A2210013893101E

第 12 页 共 21 页
Page 12 of 21

测试项目 Tested Item(s)	结果 Result	方法检出限 MDL
	019	
邻苯二甲酸酯 Phthalates (DBP, BBP, DEHP, DIBP)		
邻苯二甲酸二丁酯 Dibutyl phthalate (DBP) CAS#:84-74-2	231 mg/kg	50 mg/kg
邻苯二甲酸丁基苄基酯 Butyl benzyl phthalate (BBP) CAS#:85-68-7	N.D.	50 mg/kg
邻苯二甲酸二(2-乙基)己酯 Di-(2-ethylhexyl) phthalate (DEHP) CAS#:117-81-7	N.D.	50 mg/kg
邻苯二甲酸二异丁酯 Diisobutyl phthalate (DIBP) CAS#:84-69-5	N.D.	50 mg/kg

样品/部位描述 Sample/Part Description

- 001 混测,白色,黑色塑料 Mixed test, white, black plastic*¹
- 002 混测,黑色塑料 Mixed test, black plastic*¹
- 003 混测,黑色,橘色,蓝色透明塑料 Mixed test, black, orange, blue transparent plastic*¹
- 004 金属基材 Metal base
- 005 金属基材 Metal base
- 006 铜色金属 Cupreous metal
- 007 铜色金属 Cupreous metal
- 008 铜色金属 Cupreous metal
- 009 触点 Contact
- 010 银色金属丝 Silvery metal wire
- 011 银色金属 Silvery metal
- 012 黑色液体 Black liquid
- 013 白色油墨 White ink
- 014 混测,红色,绿色本体 Mixed test, red, green body*¹
- 015 混测,黄色塑料膜与胶,有黑色,红色油墨的白色塑料膜与胶 Mixed test, yellow plastic film and adhesive, white plastic film with black, red ink and adhesive*¹
- 016 铜色漆包线 Cupreous enameled wire
- 017 银色金属丝 Silvery metal wire
- 018 棕色本体(整体测试)Brown body (Tested as a whole)*
- 019 有黑色油墨的白色硅胶线皮 White silicone wire jacket with black ink

检测报告

Test Report

报告编号 A2210013893101E
Report No. A2210013893101E

第 13 页 共 21 页
Page 13 of 21

020 银色金属丝 Silvery metal wire
021 银色金属 Silvery metal

备注: 对于检测铅, 镉, 汞之样品已完全溶解。

-*¹=根据客户要求, 对样品进行混合测试, 测试结果不代表混合测试样品中任何一种单一材质的含量。

-*=按照目前手段, 样品无法进一步拆分, 样品整体测试, 测试结果不代表整体测试样品中任何一种单一材质的含量。

-N.D. = 未检出 (小于方法检出限或定量限)

-mg/kg = ppm = 百万分之一

-LOQ = 定量限, 六价铬的定量限为 0.10 $\mu\text{g}/\text{cm}^2$

- ∇ 六价铬浓度小于 0.10 $\mu\text{g}/\text{cm}^2$, 样品未检出六价铬。

Remark: **The sample(s) had been dissolved totally tested for Lead, Cadmium, Mercury.**

-*¹=As specified by client, the test was conducted by mixing several samples together. The result(s) shown on this report may be different from the content of any homogeneous material.

-*= The sample(s) was tested as a whole, because it's impossible to disassemble or separate it by current equipment and technology. The result(s) shown on this report may be different from the content of any homogeneous material.

-MDL = Method Detection Limit

-N.D. = Not Detected (<MDL or LOQ)

-mg/kg = ppm = parts per million

-LOQ = Limit of Quantification, The LOQ of Hexavalent chromium is 0.10 $\mu\text{g}/\text{cm}^2$

- ∇ The sample is negative for Cr(VI) – The Cr(VI) concentration is below 0.10 $\mu\text{g}/\text{cm}^2$. The coating is considered a non-Cr(VI) based coating.

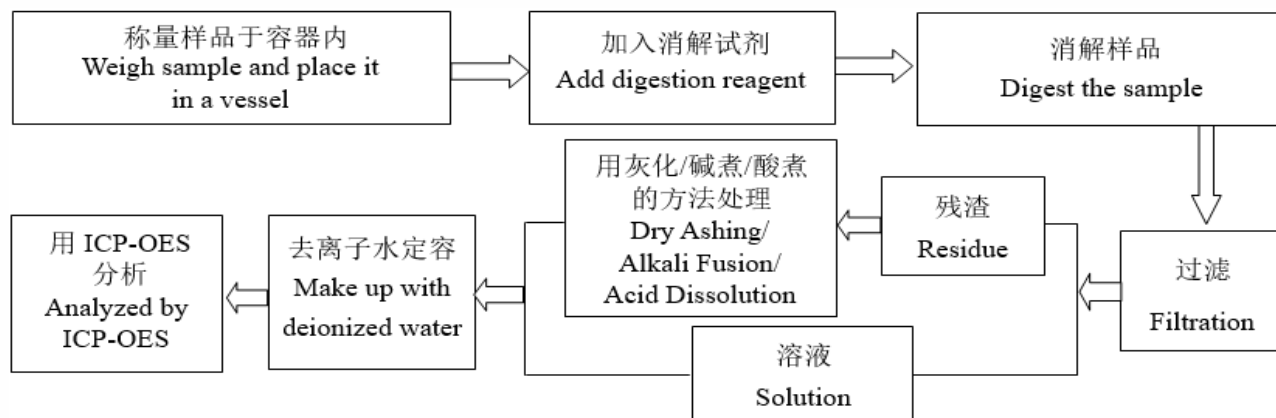
检测报告 Test Report

报告编号 A2210013893101E
Report No. A2210013893101E

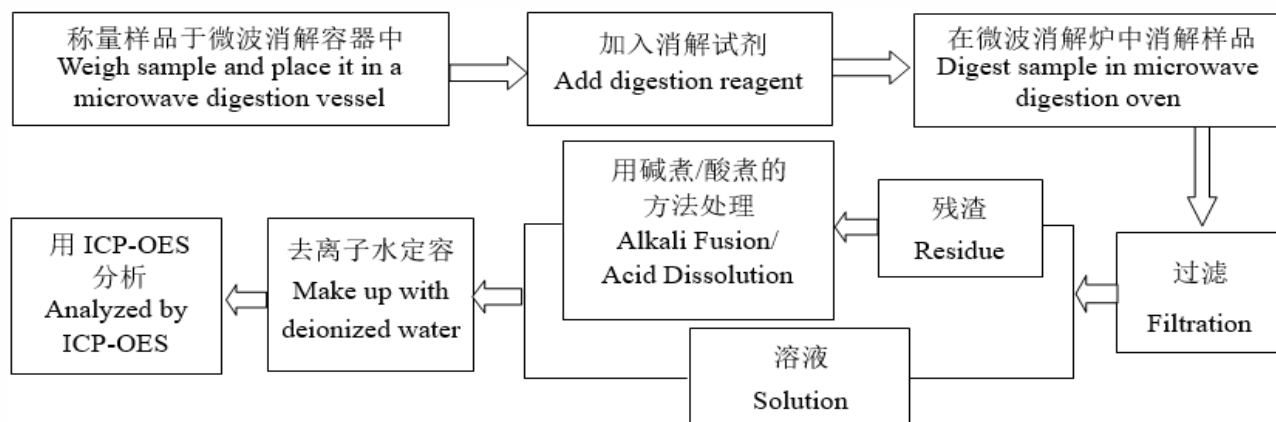
第 14 页 共 21 页
Page 14 of 21

检测流程 Test Process

1. 铅 Lead (Pb), 镉 Cadmium (Cd), 铬 Chromium (Cr)



2. 汞 Mercury (Hg)



检测报告

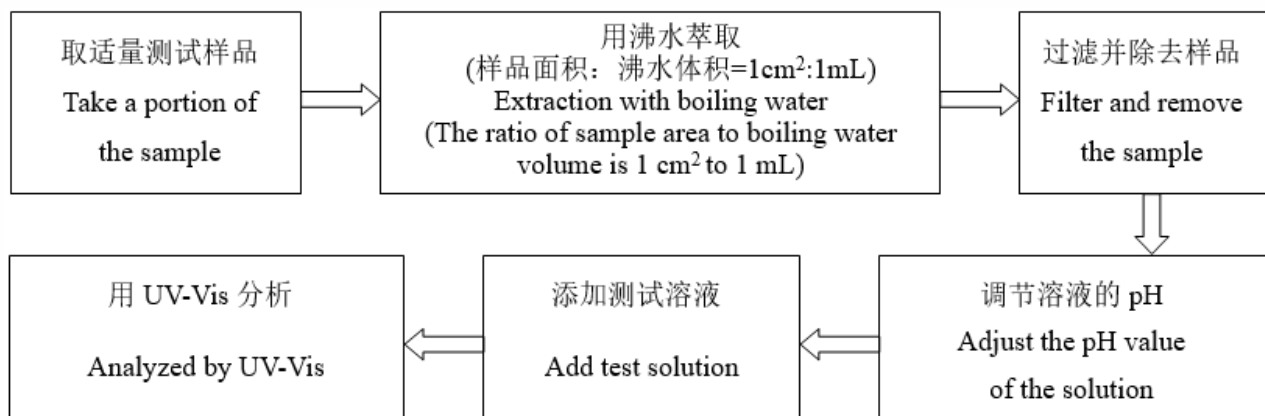
Test Report

报告编号 A2210013893101E
Report No. A2210013893101E

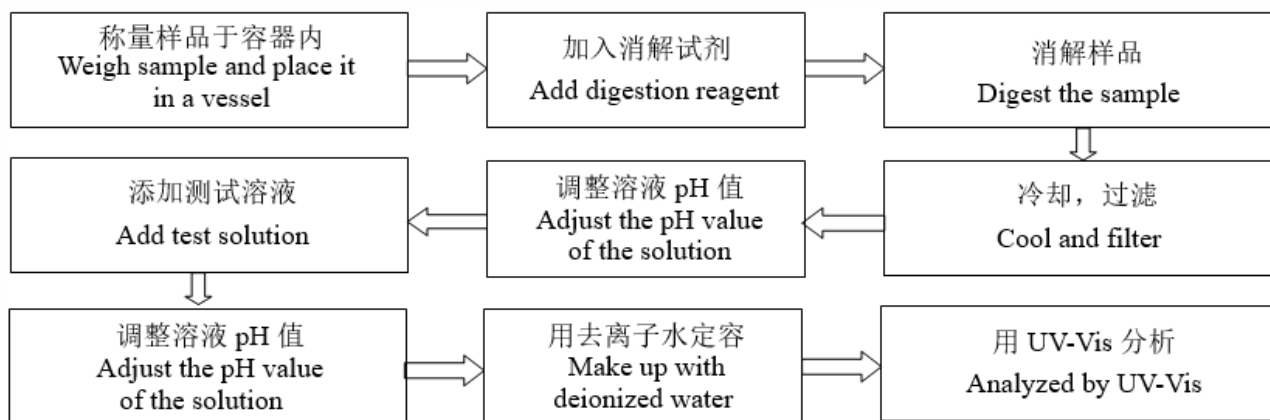
第 15 页 共 21 页
Page 15 of 21

3. 六价铬 Hexavalent Chromium (Cr(VI))

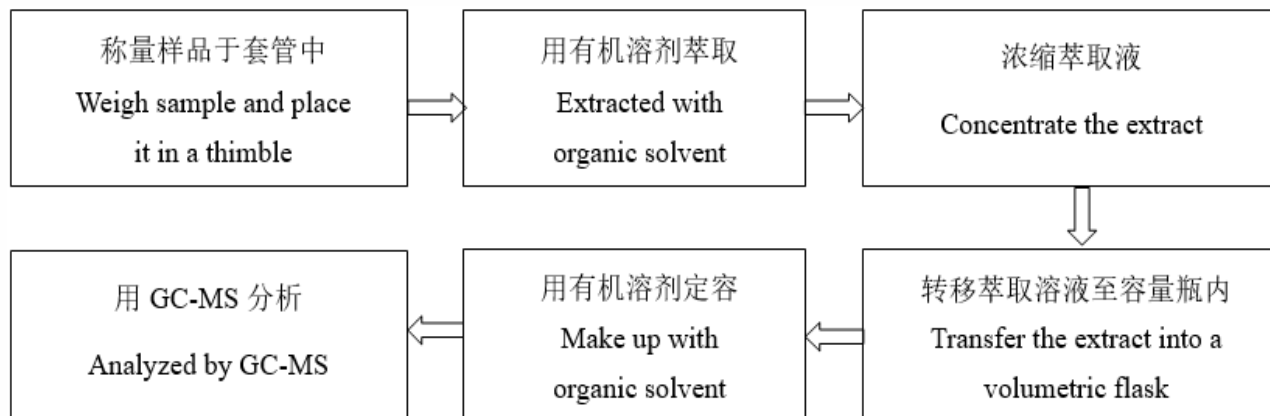
(1) IEC 62321-7-1:2015



(2) IEC 62321-7-2:2017



4. 多溴联苯 Polybrominated Biphenyls (PBBs), 多溴二苯醚 Polybrominated Diphenyl Ethers (PBDEs)



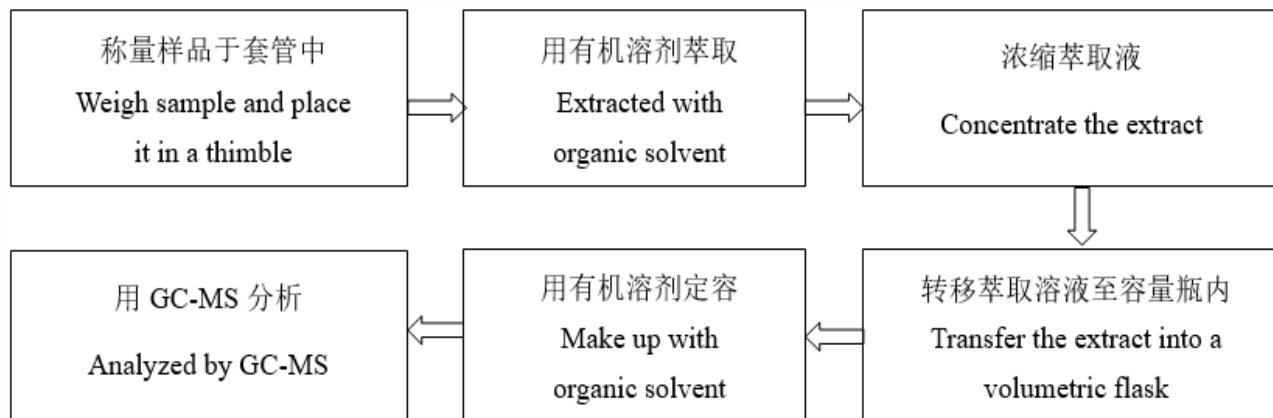
检测报告

Test Report

报告编号 A2210013893101E
Report No. A2210013893101E

第 16 页 共 21 页
Page 16 of 21

5. 邻苯二甲酸酯 Phthalates (DBP, BBP, DEHP, DIBP)



检测报告 Test Report

报告编号 A2210013893101E
Report No. A2210013893101E

第 17 页 共 21 页
Page 17 of 21

样品图片

Photo(s) of the sample(s)

001



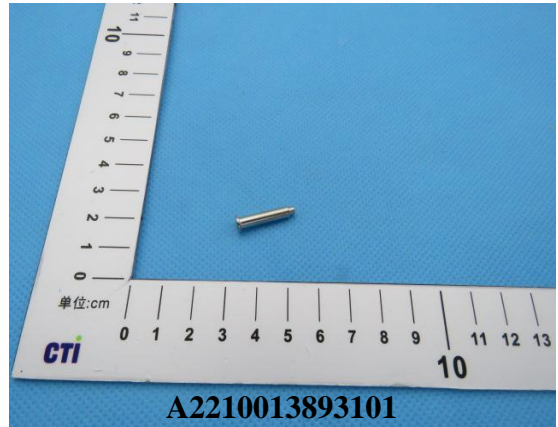
002



003



004

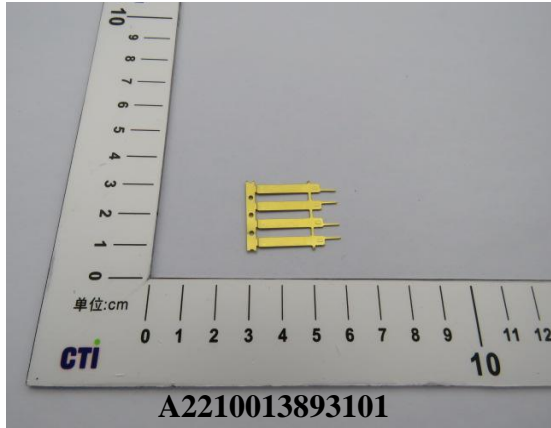


检测报告 Test Report

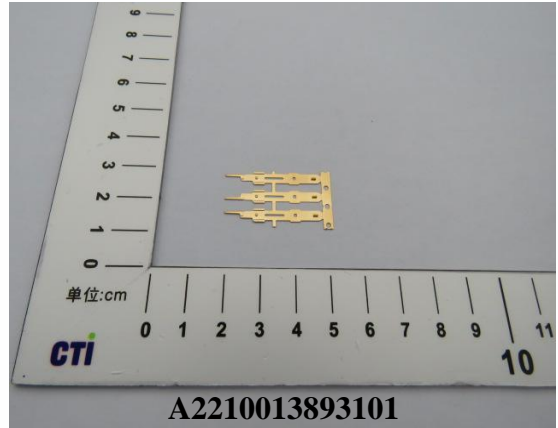
报告编号 A2210013893101E
Report No. A2210013893101E

第 18 页 共 21 页
Page 18 of 21

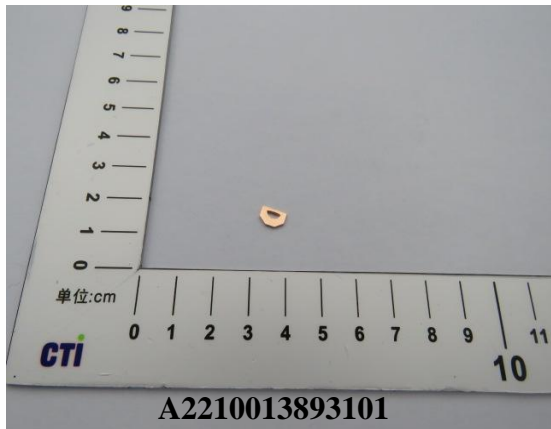
005



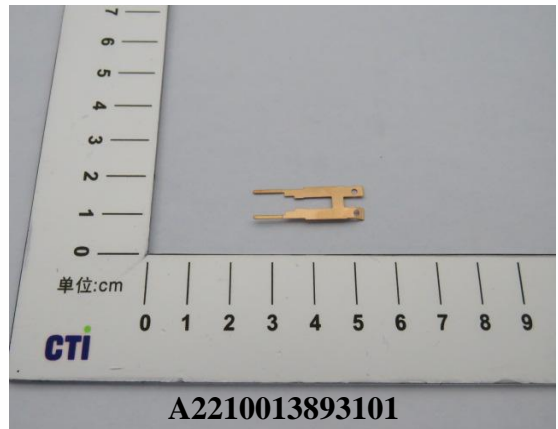
006



007



008



009



010



检测报告 Test Report

报告编号 A2210013893101E
Report No. A2210013893101E

第 19 页 共 21 页
Page 19 of 21

011



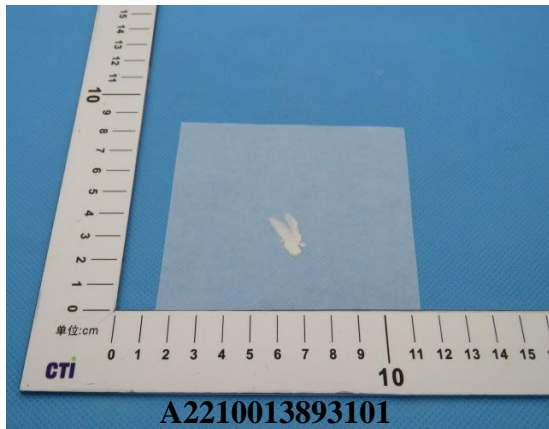
A2210013893101

012



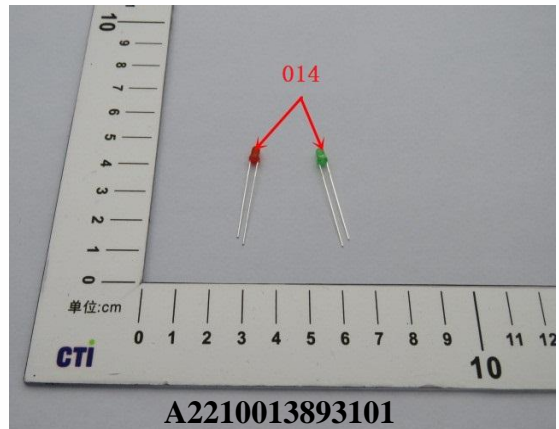
A2210013893101

013



A2210013893101

014



A2210013893101

015



A2210013893101

016



A2210013893101

检测报告 Test Report

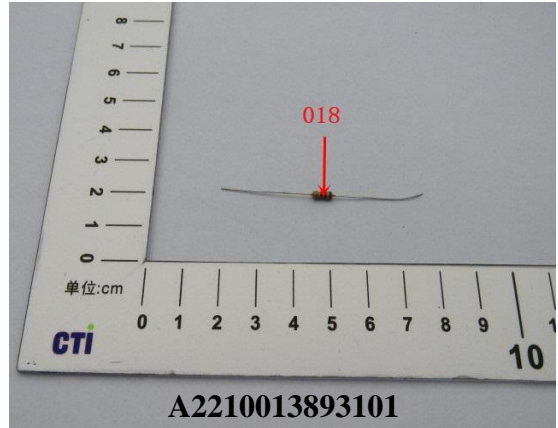
报告编号 A2210013893101E
Report No. A2210013893101E

第 20 页 共 21 页
Page 20 of 21

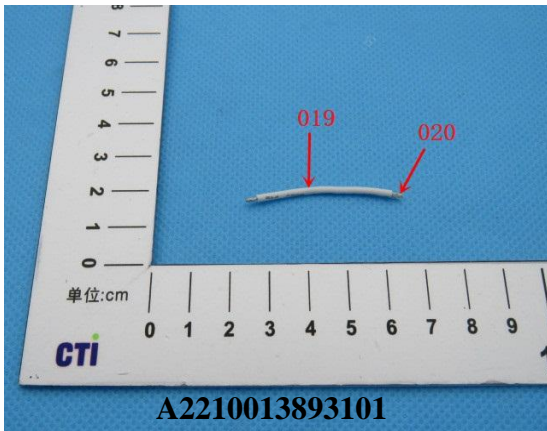
017



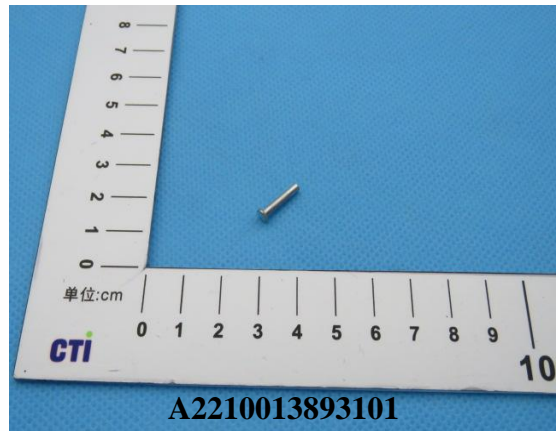
018



019-020



021



检测报告

Test Report

报告编号 A2210013893101E
Report No. A2210013893101E

第 21 页 共 21 页
Page 21 of 21

声明 Statement:

1. 检测报告无批准人签字、“专用章”及报告骑缝章无效;

This report is considered invalid without approved signature, special seal and the seal on the perforation;

2. 报告抬头公司名称及地址、样品及样品信息由申请者提供, 申请者应对其真实性负责, CTI 未核实其真实性;

The Company Name shown on Report and Address, the sample(s) and sample information was/were provided by the applicant who should be responsible for the authenticity which CTI hasn't verified;

3. 本报告检测结果仅对受测样品负责;

The result(s) shown in this report refer(s) only to the sample(s) tested;

4. 未经 CTI 书面同意, 不得部分复制本报告;

Without written approval of CTI, this report can't be reproduced except in full;

5. 如检测报告中的英文内容与中文内容有差异, 以中文为准。

In case of any discrepancy between the English version and Chinese version of the testing reports (if generated), the Chinese version shall prevail.

*** 报告结束 ***

*** End of Report ***

附录 Appendix

客户参考信息 Client Reference Information

样品序号 Sample No.	样品名称 Sample Name	客户参考信息 Client Reference Information
001	PBT(黑/白) PBT(Black/White)	<p>942 线轮,942 基座,942 直垫块,942 中片埋铜,942 直埋铜,942 外盖,942 外盖,942 底板,943 线轮,943 外盖,981 线轮,981 外盖,Y05 线轮,Y05 外盖,951 线轮,951 灯泡座,951 外盖,952 中片埋铜,951 中片埋铜,953 线轮,953 外盖,953 底板,956 线轮,956 外盖,956 底板,957 线轮,957 外盖,971 线轮,971 基座,971 外盖,971 推动杆,972 线轮,972 底板,972 外盖,122 线轮,122 外盖,134 线轮,134 外盖,134 基座,133 基座,133 线轮,133 外盖,133 推动杆,948 基座,948 线轮,948 外盖,948 底板,945 线轮,945 外盖,945 基座,,Y31 基座,Y31 外盖,132 线轮,132 外盖,132 基座,Y14 外盖,Y14 线轮,Y02 线轮,Y02 外盖,Y02 基座,963 线轮,963 外盖,946 线轮,946 外盖,964 线轮,964 外盖,941 线轮,941 底板,941 外盖,171 线轮,171 底板,171 外盖,172 线轮,172 底板,172 外盖,161 线轮,161 外盖,982 外盖,982 基座,961 线轮,952 隔离墙</p> <p>942 Bobbin,942 Base,Y9421 heel block,942 Buried copper,942 Buried copper,942 Cover,942 Cover,942 Base plate,943 Bobbin,943 Cover,981 Bobbin,981 Cover,Y05 Bobbin,Y05 Cover,951 Bobbin,951 light bulb holder,951 Cover,952 Buried copper,951 Buried copper,953 Bobbin,953 Cover,953 Base plate,956 Bobbin,956 Cover,956 Base plate,957 Bobbin,957 Cover, 971 Bobbin,971 Base,971 Cover,971 Push rod,972 Bobbin,972 Base plate,972 Cover,122 Bobbin,122 Cover,134 Bobbin,134 Cover,134 Base,133 Base,133 Bobbin,133 Cover,133 Push rod,948 Base,948 Bobbin,948 Cover,948 Base plate,945 Bobbin,945 Cover,945 Base,,Y31 Base,Y31 Cover,132 Bobbin,132 Cover,132 Base,Y14 Cover,Y14 Bobbin,Y02 Bobbin,Y02 Cover,Y02 Base,963 Bobbin,963 Cover,946 Bobbin,946 Cover,964 Bobbin,964 Cover,941 Bobbin,941 Base plate,941 Cover,171 Bobbin,171 Base plate,171 Cover,172 Bobbin,172 Base plate,172 Cover,982 Cover,982 Base plate, 961 Bobbin,952partition</p>
002	PET/PPS/LCP	<p>942 线轮,951 线轮,951 印字胶带,953 线轮,122 基座,963 线轮,942 推动杆,981 推动杆,Y05 推动杆,122 推动杆,134 推动杆,133 推动杆,948 推动杆,Y31 推动杆,132 推动杆,Y02 推动杆,941 推动杆,982 推动杆,982 线轮</p> <p>942 Bobbin,951 Bobbin,951 Marking tape,953 Bobbin,122 Base,963 Bobbin,942 Push rod,981 Push rod,Y05 Push rod,122 Push rod,134 Push rod,133 Push rod,948 Push rod,Y31 Push rod,132 Push rod,Y02 Push rod,941 Push rod,982 Push rod,982 Bobbin</p>

样品序号 Sample No.	样品名称 Sample Name	客户参考信息 Client Reference Information
003	PA66/PJ-4(酚醛膜)/POM/PC PA66/PJ-4(Phenolic moulding)/POM	插座外盖壳,插座盖板,961 基座、961 外盖、951 基座,952 基座,插座滑块,951 外盖,952 外盖 Socket Cover,Socket cover,961Base, 961Cover, 951 Base,952 Base,Socket slider,951 Cover,952 Cover
004	铁 iron	所有支架、磁极片,所有铁芯,943 固定端子,951 固定端子,953 固定端子,956 固定端子,964 固定端子,963 固定端子,961 线轮端子,951 铆钉,防磁罩 All Bracks、Poles,All Core,943 Terminals,951 Terminals,953 Terminals,956 Terminals,134 Bracks,964 Terminals,963 Terminals, 961 Reels Terminals,951Rivet, Magnetic shields
005	铜合金 Copper alloy	942 线轮端子,943 NO 接点端子,943 NC 接点端子,981NO 端子,951 线轮端子,951 接点端子,951 中片端子,953 线轮端子,953 连接片,956 线轮端子,956 固定端子,963 端子,插座连接片,952 接点端子,952 线轮端子,122NC 端子,134 固定端子,945 接点端子,171 接点端子,161 线轮端子,161 接点端子,161 中片端子,172 接点端子,961NO 端子, 961NC 端子,961 中片端子, 942 Reels Terminals,943 Contact terminals,943 Contact terminals,981 NO Contact terminals,951 Reels Terminals,951 Contact terminals,951 Terminals,953 Reels Terminals,953 Connection piece,956 Reels Terminals,956 Contact terminals,Terminals,134 terminals,945 Contact terminals,171 Contact terminals,,161 Reels Terminals,161 Contact terminals,161 Terminals,172 Contact terminals, 961 Contact terminals,961Contact terminals,961Terminals,
006	铜合金 Copper alloy	Y05 接点端子,953 中弹片,948 挡止片,948 线圈端子,132 挡止片,132 线圈端子,Y02 挡止片,946 静簧,948 中弹片,945 中弹片,Y31NO 端子,132 中弹片,Y31 中弹片,941 接点端子,941 中片端子,122NO 端子,122 中片端子,942 接点端子,942 挡止片,981 中弹片,981 挡止片,Y05 中弹片,956 接点端子,957 左线轮端子,957 右线轮端子,971 NO 端子,971 中片端子,971 挡止片,122 挡止片,134 挡止片,133 挡止片,133 中弹片,133NO 端子,Y14 中弹片,964 中弹片,946 动簧,941 中弹片,943 中弹片,134 中弹片,134NO 端子, 134NC 端子, 957 接点端子,171 中弹片, 951 中弹片,952 中弹片,972 中弹片,Y14 接点端子,插座夹簧,161 中弹片,982 挡止片,982 中片端子,982 接点端子,172 中弹片, 961 中弹片, 972 线轮端子,972NO 端子,972NC 端子,972 中片端子,946 线轮端子,946NO 端子,946NC 端子,946 中片端子 Y05 Contact terminals,953 Movable contsct arm spring,948 Stop taps,948 Coil terminal,132 Stop taps,132 Coil terminal,Y02 Stop taps,946 Static spring,948 Movable contsct arm spring,945 Movable contsct arm spring,Y31 NO Terminals,132 Movable contsct arm spring,Y31 Movable contsct arm spring,941 Contact terminals,941

样品序号 Sample No.	样品名称 Sample Name	客户参考信息 Client Reference Information
		Terminals,122 NO Terminals,122 Terminals,942 Terminals,942 Stop taps,981 Movable contsct arm spring,981 Stop taps,Y05 Movable contsct arm spring,956 Terminals,957 Left reels Terminals,957 Right reels Terminals,971 Terminals,971Terminals,971 Stop taps,122 Stop taps,134 Stop taps,133 Stop taps,133 Movable contsct arm spring,133 NO Terminals,Y14 Movable contsct arm spring,964 Movable contsct arm spring,946 Dynamic spring,941 Movable contsct arm spring,943 Movable contsct arm spring,134 Movable contsct arm spring,134 NO Terminals,134 NC Terminals,957 Contact terminals,171 Movable contsct,951 Movable contsct arm spring,952 Movable contsct arm spring,972 Movable contsct arm spring,Y14 Contact terminals,Socket collet,161 Movable contsct arm spring,982 Stop taps,982 Movable contsct arm spring,982 Contact terminals,172 Movable contsct arm spring, 961 Movable contsct arm spring, 972 Reels Terminals,972 NO Terminals,972 NC Terminals,972 Terminals,946 Reels Terminals,946 NO Terminals,946 NC Terminals,946 Terminals
007	铜合金 Copper alloy	942 缓放铜,943 接点端子,943 接点端子,951 缓放铜,953 缓放铜,953 编织线,956 编织线,963 接点端子,964 接点端子,964 接点端子,948 端子,948 中片端子,945 端子,945 中片端子,132 端子,132 端子,132 中片端子,Y02 端子,Y02 中片端子,161 铆钉,953 接点端子 942 Slow release of copper,943 Contact terminals,943 Contact terminals,951 Slow release of copper,953 Slow release of copper,953 Braided line,956 Braided line,963 Contact terminals,964 Contact terminals,964 Contact terminals,948 Terminals,948 Terminals,945 Terminals,945 Terminals,132 Terminals,132 Terminals,132 Terminals,Y02 Terminals,Y02 Terminals,161 Rivet , 953 Contact terminals
008	铜合金 Copper alloy	942 中弹片,956 中弹片,971 中弹片,942,956,971, Movable contsct arm spring
009	接点 Contacts	银合金 Silver Alloy
010	Ag	银丝 Silver Wire
011	钢 Steel	Y05 挡止片,951 弹簧,956 弹簧,941 挡止片,945 挡止片,951 螺丝,插座螺丝,161 螺丝 Y05 Stop taps,951 Spring,956 Spring,941 Stop taps,945 stop taps,951 Screw,Socket screw,161 Screw
012	胶 Glue	胶 Glue
013	油墨 Ink	油墨 Ink

样品序号 Sample No.	样品名称 Sample Name	客户参考信息 Client Reference Information
014	发光二极管/二极管 LED/Diode	二极管/二极管 LED/Diode
015	聚脂薄膜 Polyester film	黄胶带/印字胶带 Yellow tape/Marking tape
016	漆包线 Enameled	漆包线 Enameled
017	铜包钢线 Copper Clad Steel	用铜包钢钢线机种 Copper Clad Steel Wire models
018	碳膜电阻 Resistor	碳膜电阻 Resistor
019	硅胶 Silicon Dioxide	连接线 Connection Wire
020	镀锡铜丝 Tinned copper wire	连接线 Connection Wire
021	铝 AL	942 铆钉 942 Rivet

客户参考图片（非测试样品） Client Reference Photo (Non-tested sample)

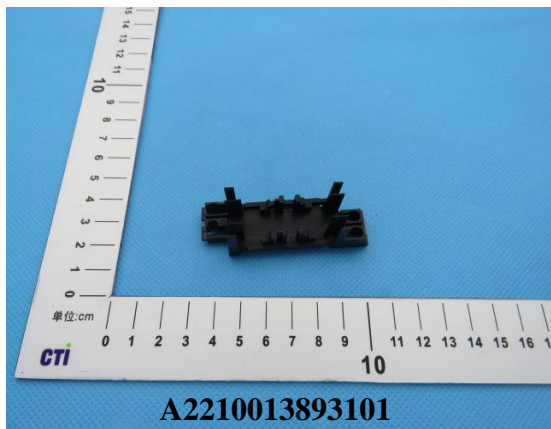
001



002



003



004



005



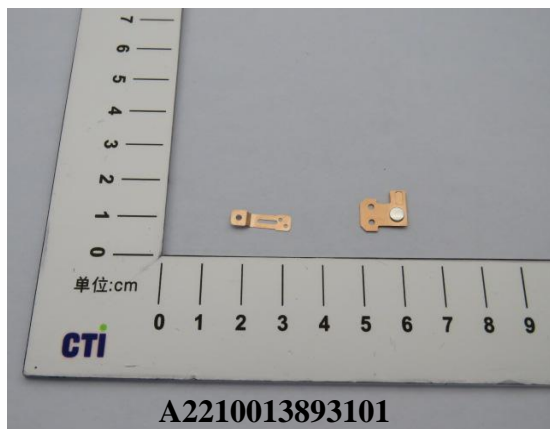
006



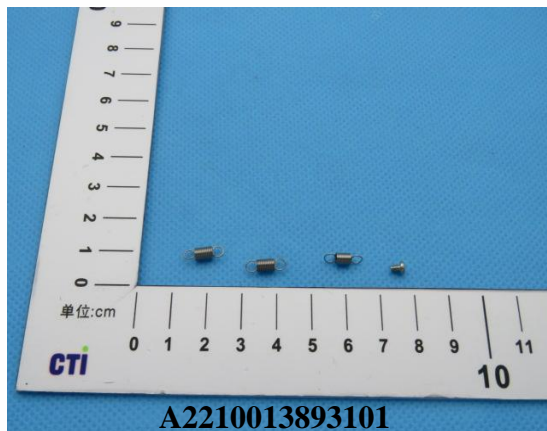
007



008



011



声明 Statement:

附录内容由申请者提供，申请者应对其真实性负责，CTI 未核实其真实性。

The Appendix Information was/were provided by the applicant who should be responsible for the authenticity which CTI hasn't verified.