

## FEATURES特点

- Contact rated load up to 80A/14VDC.  
接触额定负载可达到80安培/直流14伏特。
- Contact arrangement 1Form A, 1Form C available.  
接触形式为1组常开, 及1组转换.供您选择。
- Quick connect or P.C.B. terminals.  
有快接端子及电路板端子两种供选择。



用途：适用于电动车、汽车充电逆变器上使用。

## CONTACT RATING 接点参数

Contact Form 接点形式	1A SPST-NO	1C SPDT
Rating Load(Resistive)额定负载(阻性)	80A/14VDC	NO:80A/14VDC NC:60A/14VDC
Max. Switching Power最大切换功率	1120W	
Max. Switching Voltage最大切换电压	14VDC	
Max. Switching Current最大切换电流	80A	
Min. Switching Current/Voltage 最小切换电流/电压	100mA 5VDC	
Contact Rating Current接点负载电流	80A	NO/NC : 80A / 60A
Contact Material接点材质	Ag Alloy银合金	

## CHARACTERISTICS 性能参数

Electrical Life 电气寿命	1 × 10 <sup>5</sup>	
Mechanical Life机械寿命	1 × 10 <sup>7</sup>	
Insulation Resistance绝缘阻抗	Min. 100MΩ 500VDC	
Contact Resistance(Initial)接触电阻	≤ 100mΩ (6VDC 1A)	
Operate Time 动作时间	≤ 7ms	
Release Time 开放时间	≤ 5ms	
Initial Dielectric Strength 耐压	between open contacts开放接点间: 50/60Hz 500VAC 1min. between contacts and coil线圈接点间: 50/60Hz 500VAC 1min.	
Vibration Resistance 耐振动	Malfunction: 误动作:	10 ~ 40Hz Double Amplitude双振幅1.5mm
	Damage limits: 耐久:	10 ~ 40Hz Double Amplitude双振幅1.5mm
Shock Resistance 耐冲击	Malfunction: 误动作:	10G
	Damage limits: 耐久:	100G
Ambient Temperature环境温度	-40°C ~ +85°C (No freezing 无结冰)	
Relative Humidity相对湿度	85% at 40°C	
Unit Weight单位重量	约Approx. 37g	

## ORDERING INFORMATION 型号代码说明

Y16- 1A - 12 D P M  
 1 2 3 4 5 6

- |   |  |
|---|--|
| <p>1. Model Number 型号</p> <p>2. Contact Arrangement 接点形式<br/>         1A = 1 Form A 1 组常开<br/>         1C = 1 Form C 1组转换</p> <p>3. Coil Voltage 线圈电压<br/>         6、12、24VDC</p> | <p>4. Coil Type 线圈形式<br/>         D=DC 直流</p> <p>5. Terminal Type 端子形式<br/>         Nil=Plug in Type 插入型<br/>         P=P.C.B. Terminal Type 电路板端子型</p> <p>6. Dust Cover Type 防尘外盖形式<br/>         Nil= Standard Dust Cover 标准防尘外盖<br/>         M = Mounting Bracket Dust Cover 有靠背防尘外盖</p> |
|---|--|

## COIL RATINGS (at 20°C) 线圈额定值 (在20°C)

COIL TYPE 线圈形式	Coil Nominal Voltage 线圈额定电压 (V)	Coil Resistance 线圈阻抗 ( $\Omega \pm 10\%$ )	Pick-Up Voltage 动作电压(V) (Max)	Drop-Out Voltage 开放电压(V) (Min)	Nominal Current 额定电流 (mA)
DC Standard Coil 直流标准线圈 (abt. 2.0W)	6	18	3.6	0.6	333
	12	72	7.2	1.2	167
	24	288	14.4	2.4	83

\* Max Continuous Voltage at 20°C: 110% of Coil Normal Voltage.  
 最大使用电压在20°C:线圈额定电压的110%

## OUTLINE DIMENSIONS 外部尺寸

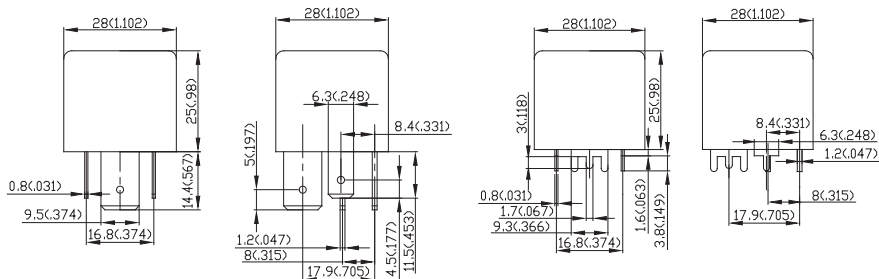
UNIT: mm(inch) 单位: 毫米(英寸)

### Standard Dust Cover 标准防尘外盖

Dimensions 尺寸

Plug in Type 插入型

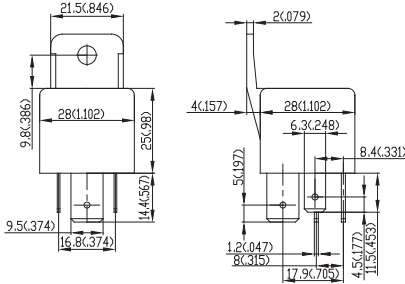
P.C.B. Type 电路板端子型



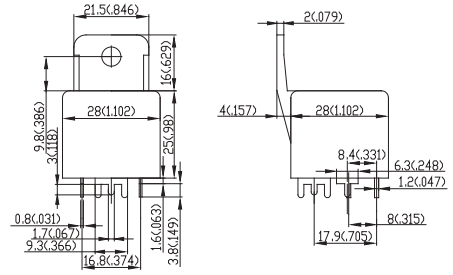
REMARK: Dimensions  $\leq 5\text{mm} \pm 0.2\text{mm}$ ,  $> 5\text{mm} \pm 0.3\text{mm}$ , the tolerance of PCB thru hole:  $+0.2\text{mm}$   
 备注: 尺寸公差  $\leq 5\text{mm} \pm 0.2\text{mm}$ ,  $> 5\text{mm} \pm 0.3\text{mm}$ , 印刷电路板孔 $+0.2\text{mm}$

## Mounting Bracket Dust Cover 有靠背防尘外盖

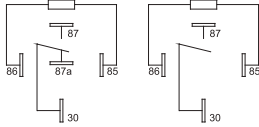
Plug in Type 插入型



P.C.B. Type 电路板端子型



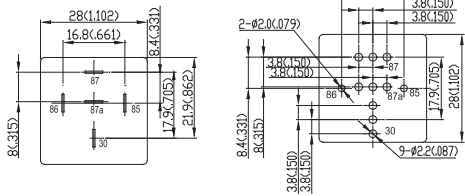
Internal Connections 接线图  
(Bottom View 底视图)



1C

1A

Drilling Plan 孔位图  
(Bottom View 底视图)



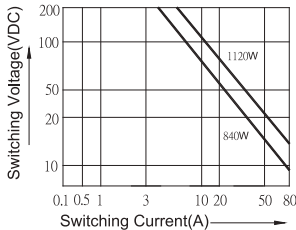
Plug in Type

P.C.B. Type

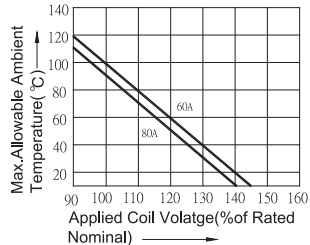
REMARK: Dimensions  $\leq 5\text{mm} \pm 0.2\text{mm}$ ,  $> 5\text{mm} \pm 0.3\text{mm}$ , the tolerance of PCB thru hole:  $+0.2\text{mm}$   
备注: 尺寸公差  $\leq 5\text{mm} \pm 0.2\text{mm}$ ,  $> 5\text{mm} \pm 0.3\text{mm}$ , 印刷电路板孔 $+0.2\text{mm}$

## Y16 Reference Data 参考资料

Limiting Curve For Power Load



Ambient Temperature VS Coil Voltage for continuous duty



Assumptions: 1. Thermal resistance =  $45^\circ\text{C}/\text{watt}$   
2. Nominal coil resistance  
3. Curves are based on 1.6watts at  $20^\circ\text{C}$