



252 系列继电器 Series Relay

FEATURES 特点

- 17A 触点切换能力
- 17A contact switching capacity
- 具有 TV-10 负载能力
- Capacity TV-10 load
- 环境温度可达 105°C
- Ambient Temperature can reach 105°C
- 1 组常开与 1 组转换的接点形式
- 1 Form A and 1 Form C contact arrangement
- 可提供符合 IEC60335-1 标准产品
- Products in accordance to IEC60335-1 standards



CONTACT RATING 接点参数

Contact Form 接点形式	1A SPST-NO	1C SPDT
Max. Switching Power 最大切换功率	4709VA 476W	
Max. Switching Voltage 最大切换电压	277VAC/28VDC	
Max. Switching Current 最大切换电流	17A	
Min. Switching Current/Voltage 最小切换电流/电压	100mA 5VDC	
Rating Load(Resistive)额定负载 (阻性)	17A 277VAC 17A 28VDC	NO:17A 277VA C/28VDC NC:12A 277VAC 10A 28VDC
Contact Material 接点材质	Ag Alloy 银合金	

CHARACTERISTICS 性能参数

Electrical Life 电气寿命	1×10 ⁵	
Mechanical Life 机械寿命	1×10 ⁷	
Insulation Resistance 绝缘阻抗	Min. 100MΩ 500VDC	
Contact Resistance(Initial) 接触电阻	≤100mΩ (6VDC 1A)	
Operate Time 动作时间	≤10ms	
Release Time 开放时间	≤5ms	
Initial Dielectric Strength 耐压	between open contacts 开放接点间: 50/60Hz 1000VAC 1min. between contacts and coil 线圈接点间: 50/60Hz 2500AC 1min.	
Vibration Resistance 耐振动	Malfunction: 误动作:	10 ~ 55Hz Double Amplitude 双振幅 1.5mm
	Damage limits: 耐久:	10 ~ 55Hz Double Amplitude 双振幅 1.5mm
Shock Resistance 耐冲击	Malfunction: 误动作:	10G
	Damage limits: 耐久:	100G
Ambient Temperature 环境温度	-40°C~+105°C(No freezing 无结冰)	
Ambient Humidity 相对湿度	45% to 85% RH	
Unit Weight 单位重量	约 Approx. 10g	

ORDERING INFORMATION 型号代码说明

252-1C-12 D	
<u>1</u> <u>2</u> <u>3</u> <u>4</u>	
1. Model Number 型号 2. Contact Arrangement 接点形式 1A = 1 Form A 1 组常开 1C = 1 Form C 1 组转换	3. Coil Voltage 线圈电压 3~48VDC 4. Coil Type 线圈形式 D: 直流 DC

备注：（1）如客户有密封型产品需求，请与我司销售人员联系

If customers have sealed product needs, please contact our sales staff.

COIL RATINGS (at 20°C) 线圈额定值（在 20°C）

COIL TYPE 线圈形态	Coil Nominal Voltage 线圈额定电压 (V)	Coil Resistance 线圈阻抗 ($\Omega \pm 10\%$)	Pick-Up Voltage 动作电压(V) (Max)	Drop-Out Voltage 开放电压(V) (Min)	Nominal Current 额定电流 (mA)
DC Standard Coils 直流标准线圈 (abt 0.36W)	3	25	2.25	0.3	120
	5	70	3.75	0.5	71
	6	100	4.50	0.6	60
	9	225	6.75	0.9	40
	12	400	9.00	1.2	30
	18	900	13.5	1.8	20
	24	1600	18.0	2.4	15
	48	6400	36.0	4.8	7.5

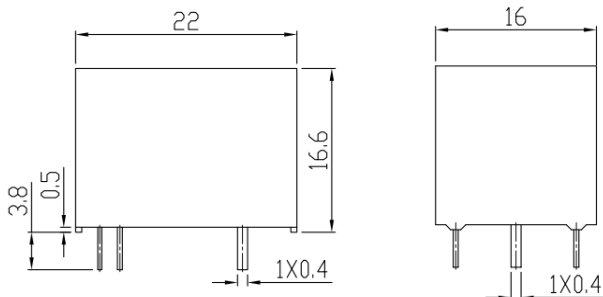
* Max Continuous Voltage at 20°C: 130% of Coil Normall Voltage.

最大使用电压在 20°C: 线圈额定电压的 130%

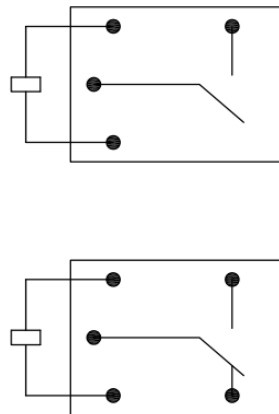
OUTLINE DIMENSIONS 外部尺寸

UNIT: mm(inch) 单位: 毫米(英寸)

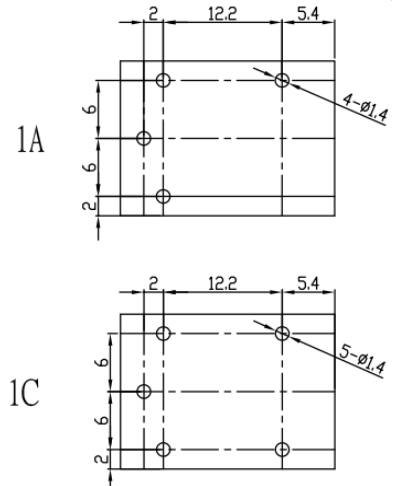
Dimensions 尺寸



Internal Connections 接线图
(Bottom View 底视图)



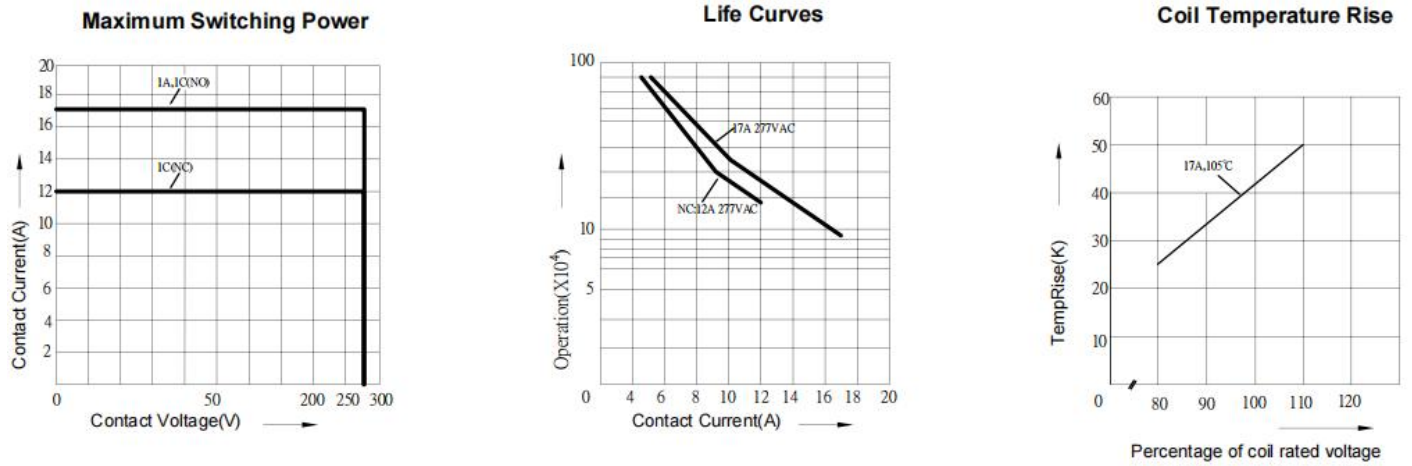
Drilling Plan 孔位图
(Bottom View 底视图)



REMARK: Dimensions $\leq 5\text{mm} \pm 0.2\text{mm}$, $> 5\text{mm} \pm 0.3\text{mm}$, the tolerance of PCB thru hole: $+0.2\text{mm}$

备注: 外部尺寸公差: $\leq 5\text{mm} \pm 0.2\text{mm}$, $> 5\text{mm} \pm 0.3\text{mm}$, 印刷电路板孔 $+0.2\text{mm}$

252 Reference Data 参考资料



SAFETY STANDARD 安规认证

SAFETY 安规名称	Coil Voltage 线圈电压	Contact Rated 接点额定值
UL FILE NO.: E169563	DC:3~48V	NO:16/17A 125/250VAC NO:16/17A 28VDC NO:TV-10 125/250VAC NO:1HP 250VAC NC:12/10/7A 125/250VAC NC:10/7A 28VDC
TUV FILE NO.: R50695954	DC:3~48V	NO:17/16A 250/277VAC NC:12/10/7A 250/277VAC
CQC	DC:3~48V	NO:17A 125/250/277VAC NC:12A 125/250/277VAC

*CQC Application 申请